

# ClearPath Connection

**UNISYS**  
imagine it. done.

June 2010

*A quarterly newsletter for Unisys ClearPath customers*

## Contents

- 2 **Unisys Vertical ClearPath Solutions: A Study in Application Enrichment**
- 4 **ClearPath Cloud Takes Shape**
- 5 **Think Outside the Box**
- 6 **New Research Proves the Business Case for ClearPath Systems**
- 7 **White Paper Makes the Case for ClearPath as an Open System**
- 8 **ClearPath ePortal – Coming Soon for OS 2200 Environments** 
- 10 **Tech Corner: Making ClearPath Apps Available on the Go**
- 14 **Partner Corner: Software & Management Associates**

*Not a subscriber of ClearPath Connection?*

Don't miss the next issue – [sign-up in the eCommunity.](#)

## Unisys Vertical ClearPath Solutions: A Study in Application Enrichment

By *Bob Tillotson, Vice President and General Manager, ClearPath Worldwide, Unisys TCIS* and *Bill Maclean, Vice President, ClearPath Programs, Unisys TCIS*



Bob Tillotson

Bill Maclean

Unisys has a rich portfolio of vertical industry solutions that run on ClearPath systems, including voicemail and messaging, airline reservations, cargo logistics management, mortgage processing, and other geography-specific solutions.

Our development teams are identifying new ways to deliver more value with less risk in our proven ClearPath hosted vertical applications. The approach is to incrementally expand the solution environment by evolving, enriching, and supplementing current application platforms to meet the needs of the marketplace.

More important, our vertical industry teams are looking to use Unisys ClearPath technology advances to propel these large-scale, enterprise-class solutions forward – and as ClearPath customers, you have the opportunity to do the same for your applications.

### Contemporary Application Modernization Capabilities

In discussions with customers across many industry segments, some common themes are emerging. These are confirmed by industry analysts and commentators:

- Organizations face increasing competition that drives the need to offer new and enhanced services, including web and mobile-based capabilities. It's also imperative that these services be delivered very quickly to meet fast changing market demands
- Organizations must improve efficiency on all fronts – from application development and new-hire training to customer care and self-service. They want to leverage existing application investments to do so – providing targeted new features that take advantage of contemporary development tools, as appropriate, and using available, pre-built services where it makes sense.

And, companies must do all of this without compromising anything in the way of security, scalability, and reliability.

Thanks to our ongoing investments, ClearPath hardware and software solutions are state-of-the-art and well-positioned to support fast provisioning of new services and improve development efficiency.

In fact, ClearPath technologies are leading the industry and provide the foundation for a new generation of innovative solutions. Today, these capabilities include:

- *Smartphone and tablet integration* with ClearPath applications, enabling an innovative human interface for mobile workers and customers, using the most current devices (Apple® iPhone® and others that conform to the WebKit development standards)
- *Open development technologies*, such as Java and PHP, which allow open source applications and application extensions to be supported on ClearPath systems transparently, addressing application development speed and controlling costs
- *Web Services development capabilities* that can easily be applied to existing ClearPath applications, extending their reach
- *ClearPath foundation attributes* that assure scalability, reliability, security, and management support for mission-critical solutions

These features are there for ClearPath developers to leverage right now, and provide a path to better services for customers and staff and improved organizational efficiency – quickly and at low cost.

## Fast, Efficient Mobile Device Integration

Consider the value of Web Service and mobile device integration with an airline solution. ClearPath ePortal provides the opportunity to mobile enable a ClearPath application – allowing supervisors to access information anywhere and at any time, and enabling travelers to perform a range of self-service functions. There are many technologies to expose ClearPath based applications and transactions as Web Services or invoke outside services that provide needed functionality.

Unisys approach to mobile device integration is to generate applications that conform to WebKit – an emerging industry standard for mobile apps. This approach means that we are able to quickly support new devices that leverage WebKit, because the effort is a qualification, not re-development. Therefore, our customers can use this technology with the confidence that it will support new devices as they become available.

## A "ClearPath Way" to Augment Existing Applications with Java and Web Services

Most ClearPath applications represent years of development effort and significant intellectual property. Yet, there's an unrelenting requirement to add functionality to address new or emerging business requirements. Frequently, such demands can be met by buying or building a Java-based solution to enhance the existing vertical application.

Unisys investments in the ClearPath OS 2200 JProcessor and MCP JProcessor support the decision to buy or build Java-based applications and services or use Java-based open source solutions. These specialty engines offer a cost-effective deployment platform that tightly integrates with, and is under the control of, the ClearPath OS 2200 or MCP operating environments. The result is the ability to bring Java into your ClearPath application portfolio with the confidence that the deployed system fits within the reliable, secure, and scalable ClearPath environment.

## Application Enrichment has Never Been Easier

The ClearPath hardware and software environment is in step with industry trends – and Unisys is taking excellent advantage of these investments. Now it's your turn. You have a major investment in your ClearPath applications and you're likely to be facing the same demands to offer new and better services as quickly and efficiently as possible. New ClearPath technology, services, and solutions are here today to help.

*To learn more about ClearPath ePortal, ClearPath OS 2200 JProcessor, ClearPath MCP JProcessor, and other ClearPath innovations, ask your Unisys sales executive or visit the [eCommunity](#).*

## ClearPath Cloud Takes Shape



We're sure by now that you've heard plenty of buzz surrounding the concept of cloud computing. Cloud computing has become a very visible element of our industry – ranking first on Gartner, Inc.'s list of top 10 strategic technologies for 2010.

Unisys is committed to helping organizations like yours maximize the value of cloud computing across all of our offerings. This commitment to keeping pace with new technologies was the genesis of the ClearPath Cloud strategy – a cloud solution designed specifically for the ClearPath environment.

To determine the optimal delivery of the ClearPath Cloud, we turned to our ClearPath customer base – considering your ongoing requirements and the best ways a cloud solution could meet these needs. What we learned is that most ClearPath users aren't looking to do core business in a cloud – rather, the majority is focused on leveraging a cloud to supplement current activities.

In light of these facts, our goal is to deliver a tailored cloud solution that meets your complex, changing needs and provides a cost-effective supplementary computing environment – while employing the high levels of availability, security, and performance you've come to expect from your ClearPath servers. ClearPath Cloud joins the already extensive range of ClearPath business models available to your organization – and adds new levels of flexibility to optimize the business value contributions of your IT investments.

### Creating the ClearPath Cloud

Far more than a generic, one-size-fits-all solution, the ClearPath Cloud will be designed to address the unique requirements of organizations that rely on ClearPath technology. The offering will enable you to select cloud capabilities that are most relevant to your needs, while you typically will retain your own local ClearPath environment for the majority of your ongoing operations.

We will be pursuing a variety of supplemental Platform as a Service (PaaS) and Software as a Service (SaaS) offerings for the ClearPath Cloud, including development and test, disaster recovery, and production.

For example, when leveraged for development and testing, the ClearPath Cloud could help you access the resources needed to evaluate a major software upgrade without running the risk of it adversely affecting your production environment. Or, it might allow two or more development groups to proceed in parallel in different project areas, accelerating completion of these projects and speeding time to market. >>

### Dev/Test Tops Cloud Wish List

46%

In a recent poll conducted by Unisys, 46% of respondents cited development and test environments as the first workloads they would move to the cloud.

In addition, the ClearPath Cloud can supplement an existing production environment, providing an independent, fully operational ClearPath server environment to isolate certain applications, or other specific activities.

## You May be Wondering...

As we work to make the ClearPath Cloud a reality, we understand that you may have questions about the solution, including:

- **When will the ClearPath Cloud be available?** Our plan is to introduce some ClearPath Cloud solutions in 2010, starting with focused areas like development and test.
- **How large can ClearPath Cloud production environments be?** Our initial objective is to address relatively small application environments to supplement your primary production capabilities.
- **How will the ClearPath Cloud be priced?** Pricing will be determined by the capabilities delivered by the offering, as well as license duration, performance, capacity, SLAs, and other factors.

*We'd love to hear what you have to say about how you might use the ClearPath Cloud. To do so, please contact Stuart Smith at [stuart.m.smith@unisys.com](mailto:stuart.m.smith@unisys.com).*

## Think Outside the Box

Leasing solutions can be tailored to solve unique business challenges. Here's just one example...



A Client Solutions Program provided by Key Equipment Finance

### Situation:

With its current system at maximum performance, a major healthcare company needed to add capacity but lacked the capital funds to do so.

### Solution:

A 60-month, usage-based billing solution covering hardware, software, installation, and maintenance enabled the organization to treat the "purchase" as an operating expense, rather than a capital expenditure.

### Result:

The customer got the computing performance it needed, kept expenses predictable, and gained the flexibility to add MIPS to meet spikes in demand.

*To create your own leasing success story, contact your Unisys sales representative or [Unisys Leasing Worldwide](#).*

## New Research Proves the Business Case for ClearPath Systems

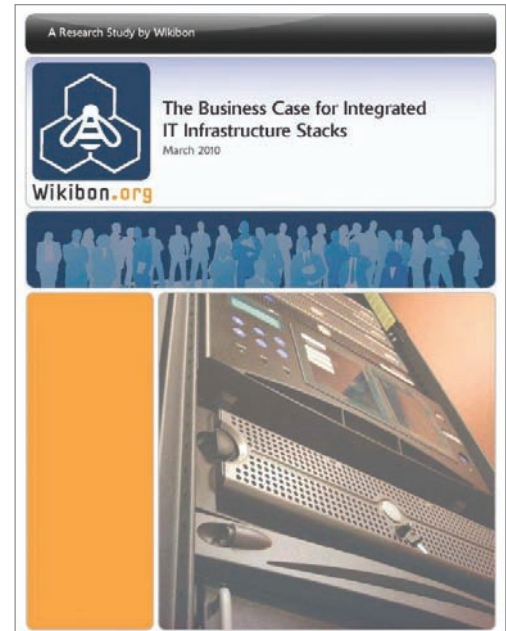
New research by [Wikibon](#) titled “[The Business Case for Integrated IT Infrastructure Stacks](#)” outlines the business value of Unisys ClearPath integrated stacks – the MCP and OS 2200 operating environments. Integrated stacks are a hallmark of ClearPath systems – and an overlooked advantage when compared to open system solutions and virtual systems.

Based on a survey Wikibon conducted with senior IT personnel who operate ClearPath servers in OLTP environments, the paper’s key findings include:

- **Low operational costs** – ClearPath servers cost 19% less, approximately \$2,383/OLTP seat/year, to run than equivalent open systems.
- **Adaptability is a strong suit** – Participants cite the ability to quickly make, test, and bring changes to market as a key benefit of their ClearPath systems.
- **Excellent availability and resiliency** – Respondents report very few disruptions, and say that the rare problem is easy to fix.
- **The strategic fit for ClearPath mainframes** – Each respondent’s ClearPath mainframe is deployed in a mission-critical, transaction-intensive operating environment.

From these responses, Wikibon concludes that ClearPath servers provide the best, most cost-effective mix of performance, security, and availability in mission-critical OLTP environments.

*To learn more about the business value of ClearPath systems, please read the full paper on [Wikibon’s web site](#).*

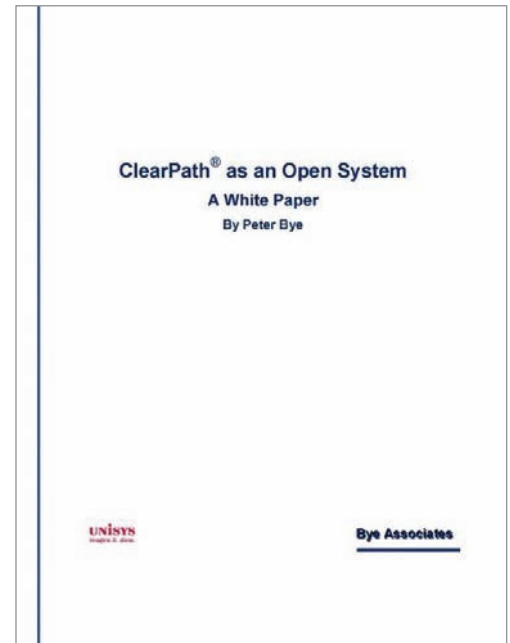


## White Paper Makes the Case for ClearPath as an Open System

Organizations such as The Open Group and the World Wide Web Consortium (W3C) define an open system as one that exposes industry-standard internal and external interfaces. “[ClearPath as an Open System](#),” a new white paper by Peter Bye, examines ClearPath systems from four key perspectives to show how they conform to this definition.

The four perspectives are:

- **Internal interfaces** – Developers are presented with industry-standard application environments and interfaces, reducing the need for specialized knowledge. Software and applications written in other systems, but conforming to the same standards, can be hosted on ClearPath systems.
- **Application development** – Graphical and integrated development environments, such as the ClearPath [OS 2200](#) and ClearPath [MCP IDE for Eclipse™](#) and [Agile Business Suite](#), help developers leverage familiar and easy-to-use tools and languages.
- **External interfaces** – ClearPath systems facilitate participation in distributed environments, including a service-oriented architecture (SOA).
- **Systems management** – ClearPath management tools span the systems included in both distributed and SOA environments, and integrate with other management products.



And unlike many other open systems, ClearPath systems also exhibit mission-critical attributes – especially reliability and security. As the paper contends, this combination of open and mission-critical attributes makes ClearPath systems the ideal platform for enterprise transaction processing.

*To see exactly what makes ClearPath an open system, read the full paper on [Unisys.com](#).*

## Have You Seen *Developing Agility*?

Issues of *Developing Agility*, a quarterly newsletter for Unisys Agile Business Suite and Enterprise Application Environment customers, are available for download in the [Publishing](#) section of the Unisys web site.



## ClearPath ePortal – Coming Soon for OS 2200 Environments

**OS**  
2200

Unisys innovative family of specialty engines has two new members – ClearPath ePortal Business and ClearPath ePortal Enterprise for OS 2200 operating environments. ClearPath ePortal is an end-to-end, integrated, and highly automated solution for extending Unisys ClearPath applications into new business technologies. It allows OS 2200 developers to capitalize on today's mobile device megatrend of making applications usable from Apple iPhones and other smartphones (see this issue's [Tech Corner](#) for more). ClearPath ePortal also makes it easy to put OS 2200 applications on the Web and have them participate in service-oriented architecture (SOA) environments.

ClearPath ePortal uses a modular, extensible architecture for addressing a wide array of ClearPath application types and allows you to:

- Use your existing ClearPath applications without change or create new ones
- Modernize applications without the need to develop in-depth or special skills related to web, mobile device, or Web Services development and deployment
- Deploy without impacting your existing ClearPath application or platform
- Manage your applications using highly automated configuration, deployment, and runtime capabilities

And now, versions of ClearPath ePortal Business and ClearPath ePortal Enterprise will be made available and **custom fit** to work within the OS 2200 environment.

### Fast, Cost-effective Application Modernization

With this first release of ClearPath ePortal specialty engines for OS 2200 operating environments, organizations can super-charge development initiatives – making existing OLTP and TIP/HVTIP transactions available via the Web and on mobile devices quickly and easily.

How quickly? One of our OS 2200 early adopter partners had ePortal up and running – and the first transaction web-enabled – in just a few hours. ClearPath ePortal really does get application modernization projects off to a very fast start.

ClearPath ePortal has three major components:

- **ePortal Developer**, which is a Microsoft® Visual Studio® plug-in that provides a visual, non-programming environment for developing your solutions – and includes all the advanced features and rich capabilities of the Visual Studio environment.
- **ePortal Specialty Engines**, which are runtime platforms designed specifically for hosting ePortal solutions. They include open-standard, enterprise-class hardware that comes in two forms:
  - ClearPath ePortal Enterprise provides a clustered server approach for scalability, as well as redundant hardware components to ensure your runtime environment has no single point of failure and scales to meet your workload.
  - ClearPath ePortal Business is a simple, rack-mounted server solution that provides the same software features, security, and ease-of-use as the Enterprise platform, but without the enterprise-class scalability and hardware redundancy.
- **ePortal Manager**, which is a point-and-click, browser-based solution that manages all aspects of the ePortal specialty engines, including hardware provisioning, automated application deployment, software upgrades, security configuration, and performance management. >>

As the following example shows, ePortal leverages many of the advanced capabilities of Microsoft's Visual Studio development environment. Web page controls are automatically generated for common application data types, such as terminal screen fields and COBOL source-record fields. All generated content can be customized, integrated with other web site content, or extended with third-party web controls, client scripting, or other web technologies. Features such as ASP.Net Master pages, ASP.Net Themes, code-behind, and a rich array of Visual Studio development features can be used for presentation development.

```

090000 01 BUFIN.
091000 05 TRANS-CODE          PIC X(18).
092000 88 GET-ACCOUNTS       VALUE "GET ACCOUNTS" ".
093000 88 TRANSFER-FUNDS     VALUE "TRANSFER FUNDS" ".
094000 05 BUFIN-REMAINDER    PIC X(44).
095000 05 TRANSFER-FUND-IN REDEFINES BUFIN-REMAINDER.
096000 10 FROM-ACCOUNT        PIC 9(1).
097000 88 INTEREST-CHECKING   VALUE 1.
098000 88 MONEY-MARKET        VALUE 2.
099000 88 VISA-CREDIT-CARD    VALUE 3.
100000 10 TO-ACCOUNT          PIC 9(1).
101000 88 INTEREST-CHECKING   VALUE 1.
102000 88 MONEY-MARKET        VALUE 2.
103000 88 VISA-CREDIT-CARD    VALUE 3.
104000 10 AMOUNT              PIC X(15).
105000 10 RECURRING           PIC X(1).
106000 10 RECURRING-FREQUENCY PIC 9(1).
107000 88 WEEKLY              VALUE 1.
108000 88 BI-WEEKLY          VALUE 2.
109000 88 MONTHLY            VALUE 3.
110000 10 EMAIL-CONFIRMATION  PIC X(1).
111000 10 FILLER               PIC X(24).
112000 05 ACCOUNTS-IN REDEFINES BUFIN-REMAINDER.
113000 10 FILLER               PIC X(44).
            
```

OS 2200 application modernization just got a whole lot easier – with ClearPath ePortal Business and ClearPath ePortal Enterprise for OS 2200 operating environments.

*To learn more about how ClearPath ePortal can work in your environment, ask your sales executive or view the recording of a recent webinar in the eCommunity.*

## Tech Corner: Making ClearPath Apps Available on the Go

*By Ralph Deyoreo, Engineering Manager/Architect, ClearPath ePortal, Unisys TCIS*

The era of the smartphone is officially upon us. With the ability to surf the Web, access e-mail, manage both personal and professional schedules, and much, much more, these little powerhouses have in many ways replaced the laptop as the way people stay connected to the world around them.

And as the adoption and capabilities of the devices grow, so too will the demand from your customers and colleagues to provide a wider breadth of mobile functionality. To help you respond, ClearPath ePortal now allows you to securely mobile enable your ClearPath MCP and OS 2200 transactions and applications for access via an Apple iPhone or other mobile device.

With this new capability, you'll be able to leverage ClearPath ePortal to mobile-enable applications that satisfy both internal and external business needs. For example, it can help financial institutions provide a mobile banking application customers can use to check account balances, transfer funds, and more, anytime, anywhere. Likewise, organizations can use this functionality to give their sales teams access to an application that lets them update account information while on the road.

### Mobile Made Easy

ClearPath ePortal delivers easy access to ClearPath applications from the iPhone using the same approach to application development and deployment you've become familiar with when developing ClearPath ePortal web and Web Service applications. As with ClearPath ePortal web and Web Service modernization, you are presented with a simple method of developing mobile applications. Using this streamlined, non-programming approach, the entire application or selected portions of the application can be created from a single ClearPath application and made available via the iPhone. >>

### What is ClearPath ePortal?

An integrated, end-to-end solution for extending ClearPath MCP and OS 2200 applications onto the Web, to mobile devices and into a service-oriented architecture (SOA), ClearPath ePortal delivers highly automated application generation and management with specialty-engine based deployment and management.

With ClearPath ePortal, you have the freedom to leverage existing ClearPath applications and transactions for many new opportunities – without requiring specialized skills or impacting the original version of the application residing on your ClearPath system.

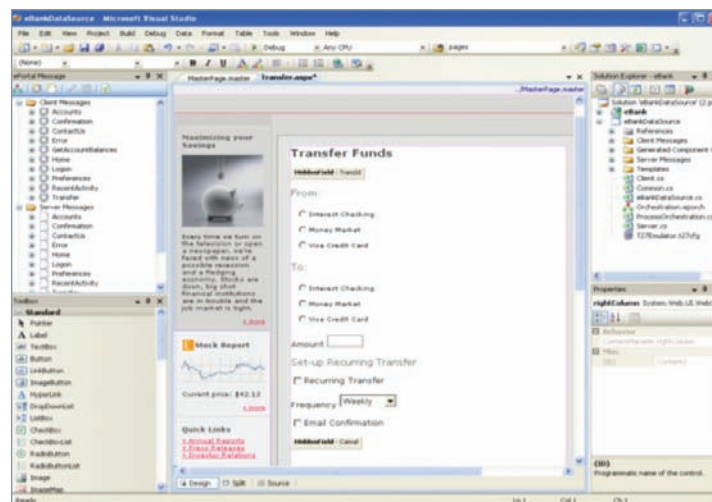
See the eCommunity for more about ClearPath ePortal for [MCP](#) and [OS 2200](#) environments.



*ClearPath ePortal allows you to mobile-enable applications for use on the iPhone.*

The process of mobile enabling a ClearPath application for use on an iPhone begins when you import application screens, forms, COBOL source data, and other application assets directly into Microsoft Visual Studio using ClearPath ePortal Developer, a Visual Studio add-in.

From here, ClearPath ePortal Developer allows you to choose to either preserve the original application flow or visually orchestrate an entirely new way for end users to navigate and execute transactions. This tool also provides an easy way to test the generated presentation within Visual Studio before going live to ensure that the application requirements have been fully realized.



*ClearPath ePortal Developer builds web, Web Service, or mobile user interfaces for new or existing ClearPath applications.*

To help you streamline the process of mobile-enabling your ClearPath applications, ClearPath ePortal leverages many of the advanced capabilities included in the Visual Studio development environment. For example, web page controls are automatically generated for common application data types, such as terminal screen fields and COBOL source-record fields. >>

In addition, all generated content can be customized, integrated with other web content, or extended using third-party web controls, client scripting, or other web technologies. A rich array of Visual Studio development features can also be employed to aid in the development of mobile ClearPath applications.

When developing for the iPhone, ClearPath ePortal provides ASP.Net controls that mimic the look and functionality of the native controls Apple provides for the device. No code needs to be written in the Objective C iPhone phone programming language.



*In this example, green-screen form fields are transformed to iPhone styled user interface controls.*

An easy-to-follow, point-and-click Visual Studio wizard is used to stage the completed solution on the ClearPath ePortal runtime platform. An administrative, wizard-driven procedure then deploys the application to the production ClearPath ePortal environment, where it can be accessed by clients.

And once the application is live, iPhone launch screen icons can be displayed just as they are for natively installed iPhone applications. In addition, much of the core iPhone functionality employed by the new mobile application, like tapping an address or phone number to display more information about the location, is handled by the device itself. >>



*Core iPhone functionality can be leveraged on the mobile ClearPath application.*

## There's an App for That

The process of making ClearPath applications accessible from mobile devices is just the beginning of the capabilities available in ClearPath ePortal. It also offers the ability to access a native iPhone application (and, therefore, its functionality) from a ClearPath application and have an iPhone application access a ClearPath service/application via SOA. And with well over 100,000 iPhone apps available today, there's a wealth of possibilities for integrating your applications via ClearPath ePortal.

Regardless of whether you want to make only simple, forms-entry applications available on mobile devices, or provide a more robust, native experience using SOA and Web Services, ClearPath ePortal delivers the capabilities that satisfy the on-the-go needs of customers and business users alike.

So now, when your customers or business users ask if there's any way to access a certain aspect of your ClearPath system on their mobile devices, you can say with confidence: yes, there's an app for that.

*This feature is now live for MCP-based systems, and will be available for OS 2200 platforms shortly. For more, please visit the [ClearPath ePortal for MCP](#) or [ClearPath ePortal for OS 2200](#) sections of the eCommunity. If you have any questions, contact Ralph Deyoreo: [Ralph.Deyoreo@unisys.com](mailto:Ralph.Deyoreo@unisys.com)*

## Partner Corner: Software & Management Associates

By Michael W. Taylor, President & Chief Executive Officer, Software & Management Associates



Currently celebrating our 30th anniversary, Software & Management Associates (SMA) enjoys a long history of providing complementary technologies to the ClearPath user base. Since day one, SMA has delivered innovative data center automation solutions to ClearPath customers – and over one quarter of our current customer base runs ClearPath mainframes.

Founded by a group of forward-thinking Unisys automation experts, SMA collaborates with Unisys to develop tools and technologies that supplement the native capabilities of ClearPath OS 2200 and MCP environments and help data center managers respond to today's dynamic business requirements.

### You're Probably Familiar with SMA, But Do You Really KNOW Us?

You're probably familiar with SMA, but "batch scheduling" represents just a fraction of our technology's far-reaching functionality. Today, SMA's OpCon/xps event-driven enterprise automation solution is all that and so much more.

In data center environments where a single scheduling error or mismanaged system resource can result in costly consequences, the need for automation that minimizes risk – while promoting agility and responsiveness – is essential. SMA's OpCon/xps is a "universal remote control" of IT automation – a true cross-platform, event-driven solution that delivers comprehensive, flexible control over many of the IT and business processes that once required manual intervention.

SMA designed OpCon/xps to **learn** and, ultimately, **understand** how businesses work. As such, the solution can anticipate certain situations and execute processes accordingly. For example, processing can be programmed to automatically commence on a fixed schedule, such as week or month end, or trigger a response to a specific event, such as the arrival of a file or loss of connectivity. OpCon/xps runs all jobs in a logical, user-defined sequence, and gives you the flexibility to dynamically modify workflows and alerts based on evolving conditions that are **specific** to your environment.

One of many innovations in OpCon/xps is its ability to capture and leverage the expertise of your experienced staff – providing process automation capabilities that reflect the unique ways your organization manages IT resources. By doing so, OpCon/xps streamlines data center operations while freeing senior IT personnel to work on more critical and professionally satisfying projects. >>

*"SMA's OpCon/xps helps us maintain quality, consistency, and speed of production in a heterogeneous environment. The solution has improved our efficiency fivefold – we haven't had to add new operators or hardware to keep up with growth. SMA OpCon/xps enables our existing staff to handle the workload."*

– Doug Eney, Vice President, Information Systems Engineering, Carnival Cruise Lines

OpCon/xps does the work of many, eliminating the need to purchase, train people on, and support multiple products throughout your ClearPath environment. In addition, OpCon/xps is compatible with other operating systems, including Microsoft Windows®, Linux®, UNIX®, and IBM. This flexibility allows you to deploy a common set of tools across your entire IT infrastructure – enabling you to easily and effectively incorporate management of your ClearPath servers into a larger data center operation.

What's more, OpCon/xps eliminates the lag time that's normally built in as a safety cushion between jobs with cross-platform dependencies and compresses the gaps from minutes to milliseconds. These features have resulted in an impressive 25 to 45 percent reduction in overhead for many ClearPath customers, and in certain cases, delivered dependable “repeatable perfection,” leading to the elimination of the third shift.

*To learn more about SMA and its products, solutions, and services, visit [smausa.com](http://smausa.com). If you have any questions about how OpCon/xps can help your organization, please contact SMA at [sales@smausa.com](mailto:sales@smausa.com).*

Specifications are subject to change without notice.

© 2010 Unisys Corporation.

All rights reserved.

Unisys, the Unisys logo, and ClearPath are registered trademarks of Unisys Corporation. Apple and iPhone are registered trademarks of Apple Inc. in the U.S. and other countries. Linux is a registered trademark of Linus Torvalds in the United States, other countries, or both. Microsoft, Windows, and Visual Studio are registered trademarks of Microsoft Corporation. UNIX is a registered trademark of The Open Group. All other brands and products referenced herein are acknowledged to be trademarks or registered trademarks of their respective holders.